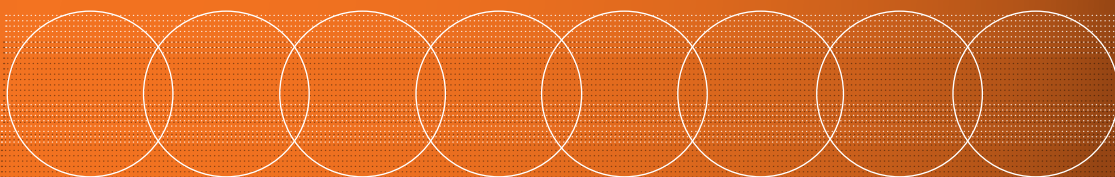




PREMIUM SCRATCH-RESISTANT COATING



## DURABILITY THAT SETS THE STANDARD.



PROVIDE YOUR PATIENTS WITH TEGRA® PREMIUM SCRATCH-RESISTANT COATED LENSES. THE MOST ADVANCED LENS AND COATING TECHNOLOGY AVAILABLE BY INDUSTRY LEADER, VISION-EASE LENS:

### WHY VISION-EASE POLYCARBONATE LENSES?

Vision-Ease Lens polycarbonate lenses are manufactured with proprietary, 4th generation water-white polycarbonate resins. That means you receive crystal clear lenses and industry-leading quality. Plus, Vision-Ease Lens polycarbonate lenses are thinner, lighter, safer, more versatile, and durable than other lens materials.

**THINNER** Vision-Ease Lens polycarbonate lenses are 50% lighter and thinner than plastic for greater comfort and a more attractive appearance.

**SAFER** Vision-Ease Lens polycarbonate lenses are shatterproof and over 10 times more impact-resistant than plastic lenses. They can withstand the impact of a 135 mph baseball without shattering.

**UV PROTECTION** Vision-Ease Lens polycarbonate lenses shield the eye from 100% of the sun's potentially harmful UV rays.

**DURABLE** Vision-Ease Lens polycarbonate lenses are more durable than other lens materials and provide better patient value.

**GREAT FOR DRILL MOUNTS** Drill mounts have met their match with Vision-Ease Lens polycarbonate lenses. Mount polycarbonate lenses with confidence without scratching, cracking or breaking.

#### ■ EXTRA TOUGH

Tegra is one of the toughest scratch-resistant coatings available. That means the lenses of even your most active patients, like kids and on-the-go adults, stay scratch-free in nearly all situations.

#### ■ HIGH BAYER RATING

Tegra lenses have one of the highest and most consistent Bayer ratings in the industry. You can count on Tegra to consistently provide industry-leading scratch resistance.

#### ■ LONGER-LASTING

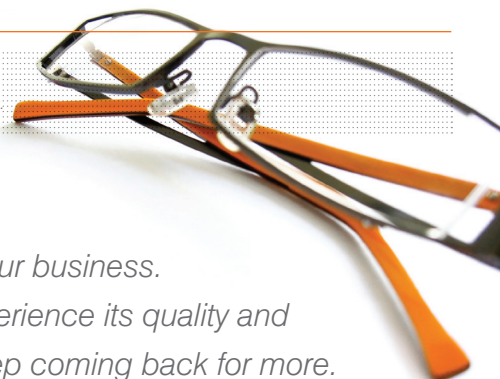
Tegra is a premium extra durable scratch-resistant coating that stays put longer. The life of lenses is extended, making satisfied, repeat customers.

#### ■ UNIVERSAL AR COMPATIBILITY

Tegra is a universal scratch-resistant coating that is compatible with most anti-reflective coatings. Give your patients the ultimate vision package, and allow for an added selling point.



Polycarbonate lenses with Tegra premium scratch-resistant coating.



*Tegra is better for your business.  
Once customers experience its quality and performance, they keep coming back for more.*

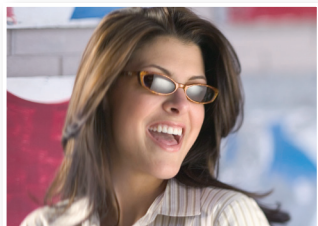
**VISION-EASE** LENS  
WORLDWIDE  
INDEPENDENT. IT'S WHY WE CARE.



## PREMIUM SCRATCH-RESISTANT COATING

### A WINNING TEAM: TEGRA AND VISION-EASE LENS PREMIUM POLYCARBONATE LENSES

Vision-Ease Lens is a well-known innovation leader in premium, high performance lenses. All premium lenses including Coppertone®, LifeRx®, SunRx®, Illumina®, Outlook® and Premium Core Polycarbonate FSV, SFSV and D28 are coated with Tegra® premium scratch-resistant coating. The Tegra coating not only protects and preserves your customers' investment, but also ensures that you have durability, consistency and reliability when you process all premium products from Vision-Ease Lens.



#### Coppertone® Polarized Polycarbonate Lens Availability

PRODUCT	POWER RANGE	COLORS	ADDS
Plano	—	HEV brown, HEV Gray	—
Single Vision	+7.00 to -14.00	HEV brown, HEV Gray	—
Bifocal D28	+5.00 to -10.00	HEV brown, HEV Gray	+1.00 to +3.00
Trifocal 7x28	+5.00 to -5.50	HEV brown, HEV Gray	+2.00 to +3.00
Illumina® Progressive	+6.50 to -10.00	HEV brown, HEV Gray	+0.75 to +3.50



#### LifeRx® Photochromic Polycarbonate Lens Availability

PRODUCT	POWER RANGE	COLORS	ADDS
Aspheric Single Vision	+8.00 to -14.00	gray, brown	—
Spherical Single Vision	+6.00 to -14.00	gray, brown	—
Bifocal D28	+7.00 to -10.00	gray, brown	+1.00 to +4.00
Bifocal D35	+5.00 to -10.00	gray, brown	+1.00 to +3.00
Trifocal 7x28	+5.00 to -10.00	gray, brown	+1.50 to +3.00
Outlook® progressive	+6.25 to -10.00	gray, brown	+0.75 to +3.50
Illumina® progressive	+6.50 to -10.00	gray, brown	+0.75 to +3.50



#### SunRx® Polarized Polycarbonate Lens Availability

PRODUCT	POWER RANGE	COLORS	ADDS
Plano	—	gray	—
Single Vision	+7.00 to -14.00	gray, brown	—
Single Vision Mirrors	+6.00 to -10.00	silver, gold, blue	—
Bifocal D28	+5.00 to -10.00	gray, brown	+1.00 to +3.00
Trifocal 7x28	+5.00 to -10.00	gray, brown	+1.50 to +3.00
Outlook® progressive	+5.00 to -10.00	gray, brown	+1.00 to +3.00
Illumina® progressive	+6.50 to -10.00	gray	+0.75 to +3.50



#### Illumina® Progressive Polycarbonate Lens Availability

PRODUCT	POWER RANGE	COLORS	ADDS
Clear polycarbonate	+6.50 to -10.00	—	+0.75 to +3.50
LifeRx photochromic	+6.50 to -10.00	gray, brown	+0.75 to +3.50
SunRx polarized	+6.50 to -10.00	gray	+0.75 to +3.50
Coppertone polarized	+6.50 to -10.00	HEV gray, HEV brown	+0.75 to +3.50
Clear plastic	+6.50 to -10.00	—	+0.75 to +3.50



#### Outlook® Progressive Polycarbonate Lens Availability

PRODUCT	POWER RANGE	COLORS	ADDS
Clear polycarbonate	+6.25 to -10.00	—	+0.75 to +3.50
LifeRx photochromic	+6.25 to -10.00	gray, brown	+0.75 to +3.50
SunRx polarized	+4.00 to -10.00	gray, brown	+1.00 to +3.00
Clear plastic	+6.25 to -10.00	—	+0.75 to +3.50
Glass 1.60 index	+6.00 to -10.00	PGX, PBX, W	+0.75 to +3.50, +3.50



#### Tegra Premium Core Polycarbonate Lens Availability

PRODUCT	POWER RANGE	BASES/ADDS
Aspheric FSV	+4.00 to -6.00	—
Spherical SFSV	+9.00 to -14.00	—
Aspheric SFSV	+8.00 to -14.00	—
Aspheric D28	+5.50 to -10.00	+1.00 to +3.00